

Digital Imaging and Media Technology Initiative

University of Illinois Library at Urbana-Champaign

Digital Imaging & Media Technology Initiative

images resources new projects research news & events people digital media resource center

The Digital Imaging & Media Technology Initiative explores the use of multimedia and network technology to promote preservation of the Library's unique collections and to provide widespread access to these collections.

The Digital Imaging & Media Technology Initiative
University of Illinois Library
1301 W. Springfield, Urbana, IL, 61801
(MC-274)
Phone: (217) 244-9021.

02.10.2000 tlc

http://images.library.uiuc.edu/resources/ Internet

<http://images.library.uiuc.edu/>

Digital Imaging and Media Technology Initiative

Established in 1994

Mission

Using digital methods, seeks to *preserve* and to make *accessible* fragile and under-utilized visual resources, to *promote their use* throughout a broad user community, and to *conduct research* that advances our understanding of the use of digital resources.

<http://images.library.uiuc.edu>

Addressing Critical Issues

1. Access to Collections
2. Digital Preservation
3. Formats, Metadata, & Vocabulary Standards
4. Search and Retrieval of Visual Information
5. Visual Resources for Instruction and Research

Motley Collection of Theatre and Costume Design

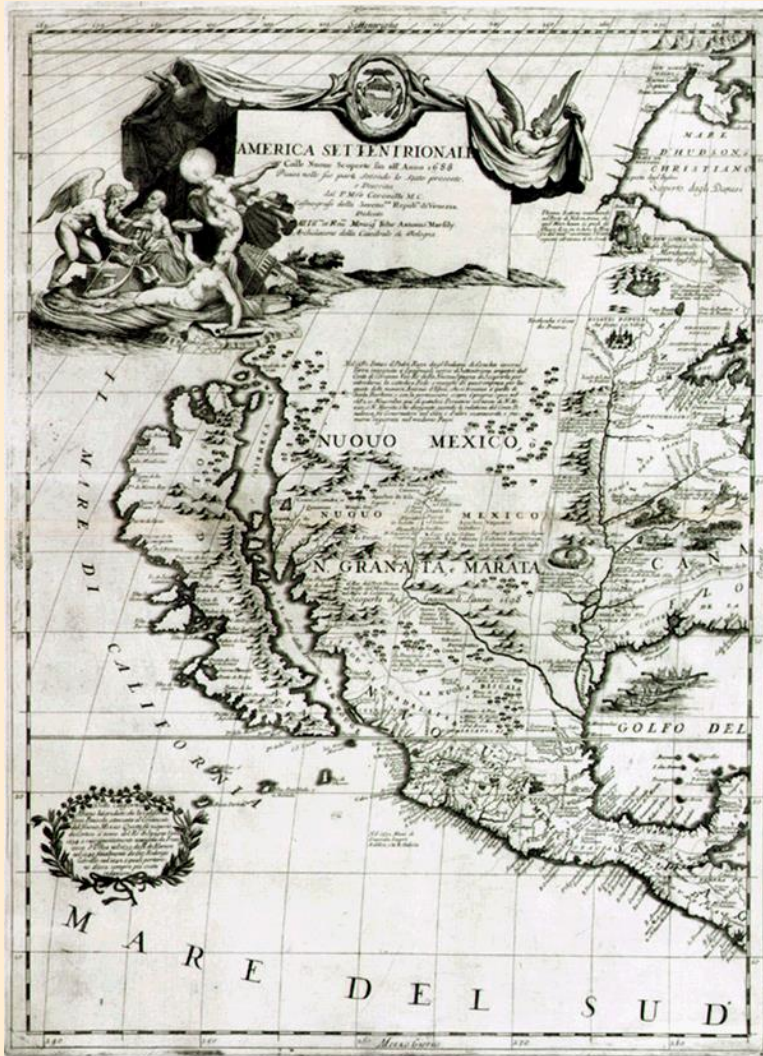
- Developed production digitization and image indexing
- Partnered with Eastman Kodak and Follett Corporation
- Tested Kodak Photo Imaging Workstation and PhotoCD format for digitizing 35mm film transparencies



Costume design for Portia, "The Merchant of Venice"
*Rare Book and Special Collections Library,
University of Illinois at Urbana-Champaign*

Maps of the Northwest Territory and Illinois

- Maps cover 300-year time span
- Benchmarked scanning of oversized images of cartographic maps from color transparencies
- Contains 84 images of North America, the state of Illinois, and counties and townships within the state
- Implemented MrSID Image server, LizardTech
- Partnered with Follett Corporation



North America: with the new discoveries of the year of 1688. Described by Mro Coronelli M. C. Cosmographer from the Serene Republic of Venice.

http://images.library.uiuc.edu/projects/historical_maps


German Emblem Book Collection

- Provides fully indexed access to *Emblemata by Johann Pfann, 1628, Rare Books and Special Collections Library, UIUC*

Netscape: Sample Emblem Images

Back Forward Home Reload Images Open Print Find Stop

Location: <http://images.granger.uiuc.edu/emblems/images.html>



Record No: 250

Motto:

Latin: Auxiliare inopi: in coelis tibi parta corona.

German: Die danckbarkeit laß bey dir stahn
Bitt für die so dir guts gethan. Den Armen
mitthail dein vermögen Gott wird dir gnad
und ehr beylegen.

Descriptors: man / obelisk / woman / child
/ street scene

Topos: appreciate goodness and be
charitable

Artist: Johann Pfann

Emblem ID: No.6, [p.6]

Book ID: B14

AUXILIARE INOPI: IN COELIS TIBI PARTA CORONA.
Die danckbarkeit laß bey dir stahn Den Armen mitthail dein vermögen
Bitt für die so dir guts gethan. Gott wird dir gnad und ehr beylegen.

[Higher resolution view](#) (150dpi, approx 130k)
To return to this screen, click the "Back" button on your Web Browser.

[Home](#) [Title Page](#) [1](#) [2](#) [3](#) [4](#) [5](#) [6](#) [7](#) [8](#) [9](#) [10](#) [11](#) [12](#) [13](#) [14](#) [15](#) [16](#) [End Page](#) [Credits](#)

Netscape: JPEG image 813x665 pixels

Back Forward Home Reload Images Open Print Find Stop

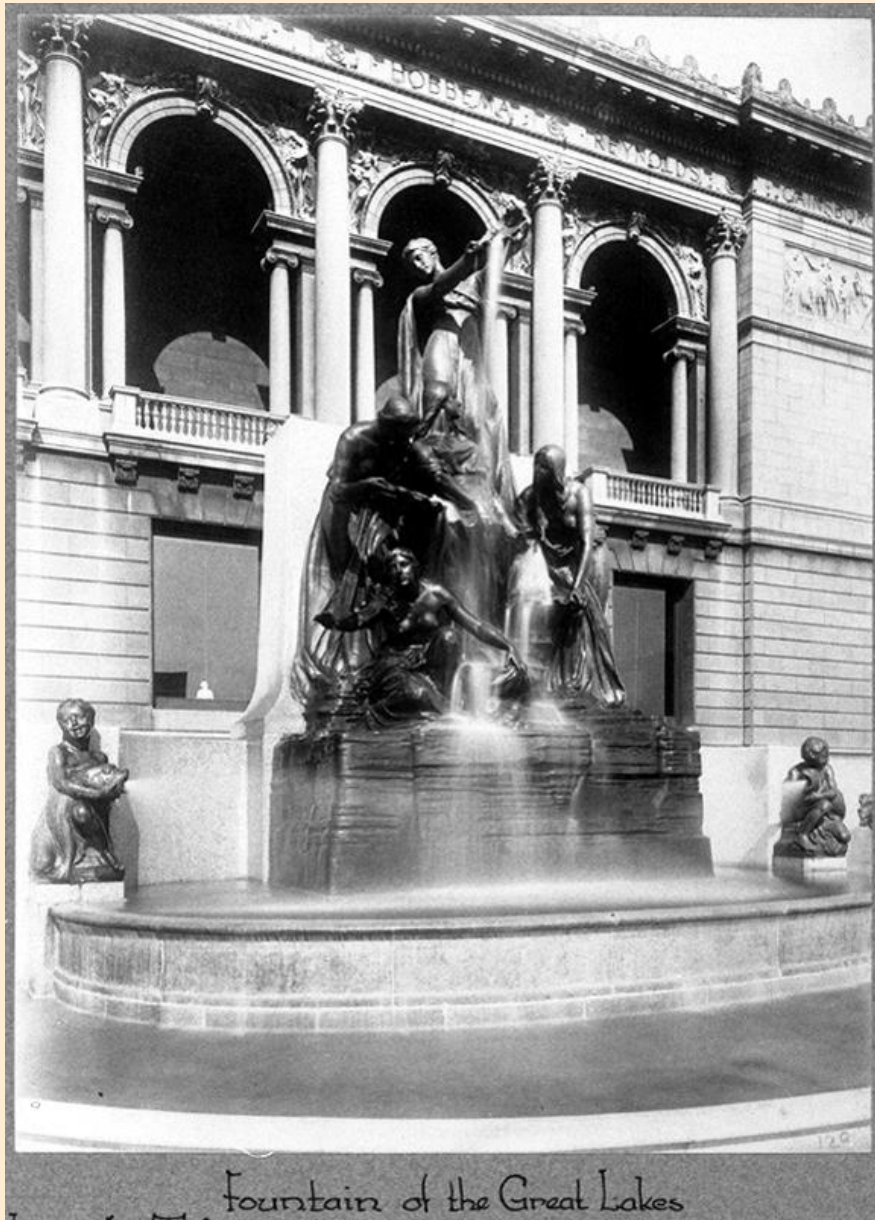
Location: <http://images.granger.uiuc.edu/emblems/Emb150.jpg/PAGE07.JPEG>



- Established best practice for digitizing rare and fragile materials
- Premier collection now internationally accessible

<http://images.library.uiuc.edu/projects/emblems>

Lorado Taft Finding Aid



- Developed with the help of Eastman Kodak and with the University of Illinois Archives
- Provides computer access to images of renowned sculptor, University of Illinois alumnus and faculty member, Lorado Taft (1860-1936), his studio, and his work
- Experimented with HTML mark-up of archival finding aid for Lorado Taft Papers

Historic Aerial Photographs of Illinois Counties

The Content:

- Most comprehensive collection of Illinois county aerial photographs in state -- the most unique and significant archive of its kind
- Photographs commissioned by U.S. Department of Agriculture 1930's to present (targeted time frame: 1936 - 1953)
- A chronology tracking urban and rural development, and change in Illinois

The Project:

- Digitize photos at high resolution to capture important details
- Index photos to provide access
- Reproduce millions of digital copies without degradation
- Store digital files to insure a permanent archive


Illinois Air Photo Imagebase

http://images.granger.uiuc.edu/aerial_photos/ - Microsoft Internet Explorer provided by MSN

File Edit View Favorites Tools Help

Back Forward Stop Refresh Home Search Favorites History Mail Print Edit

Address http://images.granger.uiuc.edu/aerial_photos/ Go Links >>



Illinois Air Photo Imagebase

Search:

[Coverage Available](#)


[Project Overview](#)

[Why digitize?](#)


[Proposal](#)

[Sponsors](#)

[Metadata Standards](#)



Section of Will County, Illinois 1954



The Digital Imaging Initiative
Grainger Engineering Library
University of Illinois at Urbana-Champaign
1301 W. Springfield, Urbana, IL, 61801 (MC-274)

Internet


Small Image Display

Search Results - Historic Illinois Aerial Photo Imagebase - Microsoft Internet Explorer provided by MSN

File Edit View Favorites Tools Help

Back Forward Stop Refresh Home Search Favorites History Mail Print Edit

Address http://images.granger.uiuc.edu/aerial_photos/searches/view.asp?PhotoID=602&View_Type=small Go Links




Scale: 1:20000

Flight Data:

- **Originator - Federal:** United States. Commodity Stabilization Service.
- **Originator - Flight:** Hycon Aerial Surveys, Inc.
- **Publication Date:** 1/1/54

Coordinates:

- **West:** -88.00°
- **East:** -87.95°
- **North:** 41.53°
- **South:** 41.49°



Description

County Name: Will
Date of Photo: 5/30/54
Photo ID: BXX-2N-11

Features

Counties

- Will

Highways

- US 30

Other Administrative Units

- Higinbotham Woods

Quadrangles

- Manhattan
- Mokena

Railroads

- Chicago, Rock Island, & Pacific
- Elgin, Joliet, & Eastern
- New York Central

Done Internet

Lake County, Illinois 1933



Sample photo at the scale of
1:20,000 (1 inch = approx.
1,667 feet)

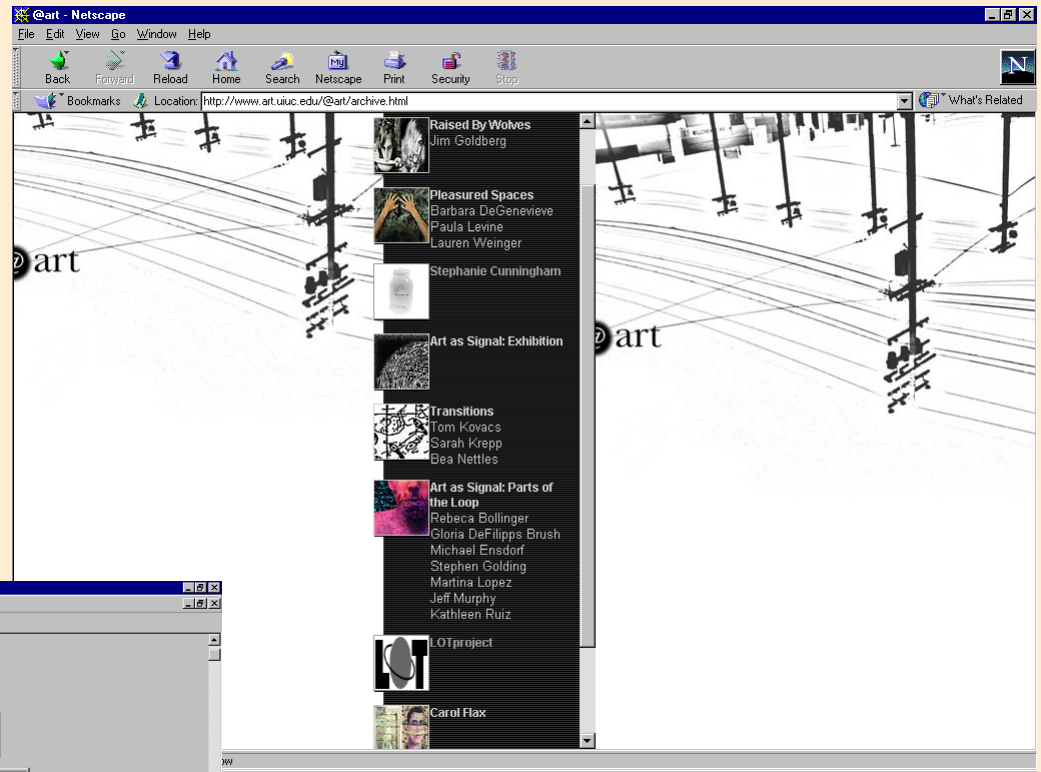


Close-up of river, bridge

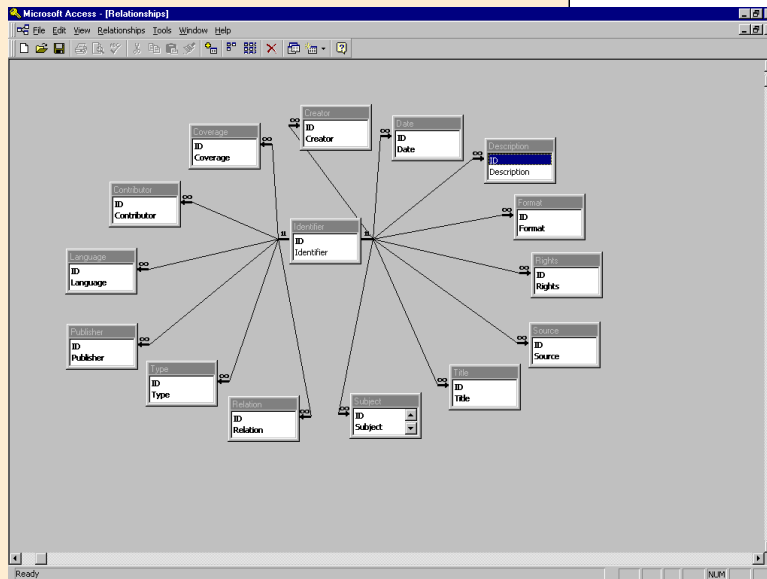
Digitization yields ground
resolution of 3.8 feet per
color pixel

@art Archives Dublin Core Project

Collaboration with @art gallery curator, Joe Squier, to create a searchable index of the ten exhibits in the gallery's archive in Dublin Core format



Entrance to the @art archive



Dublin Core relationships in MS Access

Digital Cultural Heritage Community (DCHC)



- Digitization of primary and secondary educational cultural resources
- Integration of Illinois Learning Standards
- Partnered with local area museums, libraries, and elementary schools
- Sponsored by IMLS

<http://images.library.uiuc.edu/projects/dchc>

Digital Cultural Heritage Community Project

Why an IMLS National Leadership Grant?

- Opportunity to bring together museum personnel, librarians/archivists, and teachers in a practical project
- Assist teachers in utilizing museum and library/archive collections

Model Program of Cooperation:

- Libraries; museums; schools



Digital Cultural Heritage Community Project

Digital Imaging Initiative, University of Illinois at Urbana-Champaign

Partners:

- **Schools**

Lincoln Trail Elementary School

Oakland Elementary School

Thomas Paine Elementary School

- **Museums/Libraries**

Early American Museum, Mahomet

Illinois Heritage Association, Urbana

Lincoln Trail Libraries System, Champaign

McLean County Museum of History, Bloomington

Rare Book and Special Collections Library, UIUC



Digital Cultural Heritage Community Project

Basic Issues:

- Illinois State Board of Education - Social Science Learning Standards
- Primary source materials
- Digital file formats
- Metadata
- Digital repository
- Integration of digital cultural heritage materials into curricula
- Terms & conditions for digital access to collections



The image shows a screenshot of a Netscape browser window displaying the Illinois Learning Standards website. The browser's address bar shows the URL <http://www.isbe.state.il.us/ils/default0.html>. The website features a header with the text "Welcome to the Illinois Learning Standards - Netscape" and a navigation menu with options like "File", "Edit", "View", "Go", "Communicator", and "Help". The main content area includes a banner for "Illinois Learning Standards" with a list of links: "Introduction to the Illinois Learning Standards", "A Special Message About the Standards", "The Illinois Learning Standards", "Questions and Answers About the Standards", and "Downloading the Illinois Learning Standards". Below this, there are sections for "Illinois Learning Standards Resources", "Illinois Learning Standards Tools", "Illinois Learning Standards Appendices", "Illinois Learning Standards Discussion Groups", and "Illinois State Board of Education Links to Other Learning Standards". The website also features several small images of children and a logo consisting of a central black sphere surrounded by smaller black spheres.

Teaching With Digital Content

- Museums and libraries contribute digitized primary source materials
- Provide K-12 educators and curators with technology training
- Provide concept-based training in the use of digital primary source materials
- Utilize innovative technologies to present digital primary source information

<http://images.library.uiuc.edu/projects/tdc>

Digital Media Resource Center

Promoting digitization in the arts & humanities by providing:

- Workspace
- Equipment
- Technical assistance

Digitizing equipment:

- Slide scanner, large format flatbed scanners and printers, digital cameras

Computing equipment:

- 2 Dell 6300 Poweredge servers
- 11 Dell 610 Precision workstations
- 20 Dell Optiplex stations
- Intel Express 500 series switches



Digitization Training & Resources for the Profession: *Illinois Digitization Institute*--Funded by the Illinois State Library

The screenshot shows a Microsoft Internet Explorer browser window with the title "Digital Imaging and Media Technology Initiative Linklist - Microsoft Internet Explorer". The address bar contains the URL "http://images.library.uiuc.edu/resources/links.htm". The page content includes a navigation menu on the left with categories like "scanning", "metadata & vocabulary", "copyright intellectual property", "hardware & software", "organizations & committees", "imaging programs", and "e-text". The main content area features the heading "digital imaging media technology initiative web resource list" and a paragraph stating the page is maintained by the Digital Imaging and Media Technology Initiative of the University of Illinois at Urbana-Champaign. Below this, a "Scanning" section lists several resources with their respective URLs and descriptions.

DIMTI home

- scanning
- metadata & vocabulary
- copyright intellectual property
- hardware & software
- organizations & committees
- imaging programs
- e-text

digital imaging media technology initiative web resource list

This page is maintained by the [Digital Imaging and Media Technology Initiative](#) of the [Library](#) of the [University of Illinois at Urbana-Champaign](#). Contributions are welcomed.
If you would like to suggest links for us to add to our collection, please [email us](#).
If you are visiting our site from the U of I Campus, and would like to know more about local imaging projects, [check here](#).

Scanning

Digital Imaging Tutorial provided by Cornell University -- (<http://www.library.cornell.edu/preservation/tutorial/contents.htm>) A tutorial offering basic information on digitization and digitizing cultural heritage materials.

The Digital Dog -- (<http://www.digitaldog.net>) At this site you will also find articles on imaging written by Andrew Rodney (The Digital Dog) for Photo Electronic Imaging Magazine. (November 2000)

The Scanning FAQ -- (<http://www.infomedia.net/scan/>) Get the most out of your scanner with these tips and techniques. (November 2000)

Guides to Quality in Visual Resource Imaging from the Digital Library Federation (DLF) and the Research Libraries Group (RLG) -- (<http://www.dlg.org/visguides/>) A series of essays by imaging experts addressing various aspects of planning and implementing an imaging project. (July 2000)

Questions to Consider Before Beginning an Image Database Project -- (<http://images.library.uiuc.edu/resources/20questions.htm>) A guide produced by the Digital Imaging and Media Technology Initiative (DIMTI) at the University of Illinois Urbana-Champaign.

Introduction to Imaging -- (<http://www.getty.edu/gri/standard/introimages/index.htm>) Issues in Constructing an Image Database. An online book written by Howard Besser and Jennifer Trant. An excellent place to start to learn all about digital imaging; includes linked glossary.

Digitization: A Literature Review and Summary of Technical Processes, Applications and Issues -- (http://www.library.ualberta.ca/library_html/libraries/law/digit1.htm) Includes annotated bibliography of related works on the various issues surrounding imaging. By Jann Lynn-George at the University of Alberta. (May 1996).

<http://images.library.uiuc.edu/resources/links.htm>



The Image Quality Calculator is a guide developed to help determine optimal image resolution (in dpi) and file size (in megabytes) for digital capture.

The program calculates resolution and file size, based upon values you enter for a document.

A screenshot of a Netscape browser window displaying the Image Quality Calculator. The browser's address bar shows the URL 'http://images.granger/calculator/image_calc.asp'. The main content area is divided into two sections. The left section, titled 'Image Dimensions', contains two input fields for 'Width' and 'Height', followed by radio buttons for 'inches' (selected) and 'centimeters'. Below these is a 'Next Step' button. The right section, titled 'Notes', contains a paragraph of text: 'The dimensions of the original document (e.g., photograph, manuscript page, or drawing) are required in order to calculate file size, resolution, and quality. If you plan to use a flatbed scanner, it is also important to measure the document to be certain that it will fit on the scanning bed. Most commercial flatbed scanners range in dimensions from 8.5" x 14" to 12" x 17".' At the bottom of the page, there is a small line of text: 'Calculations based on equations published by Cornell University Library (©1996). Please read the [introduction](#) to learn more about the Image Quality Calculator.'

<http://images.library.uiuc.edu/projects/calculator>